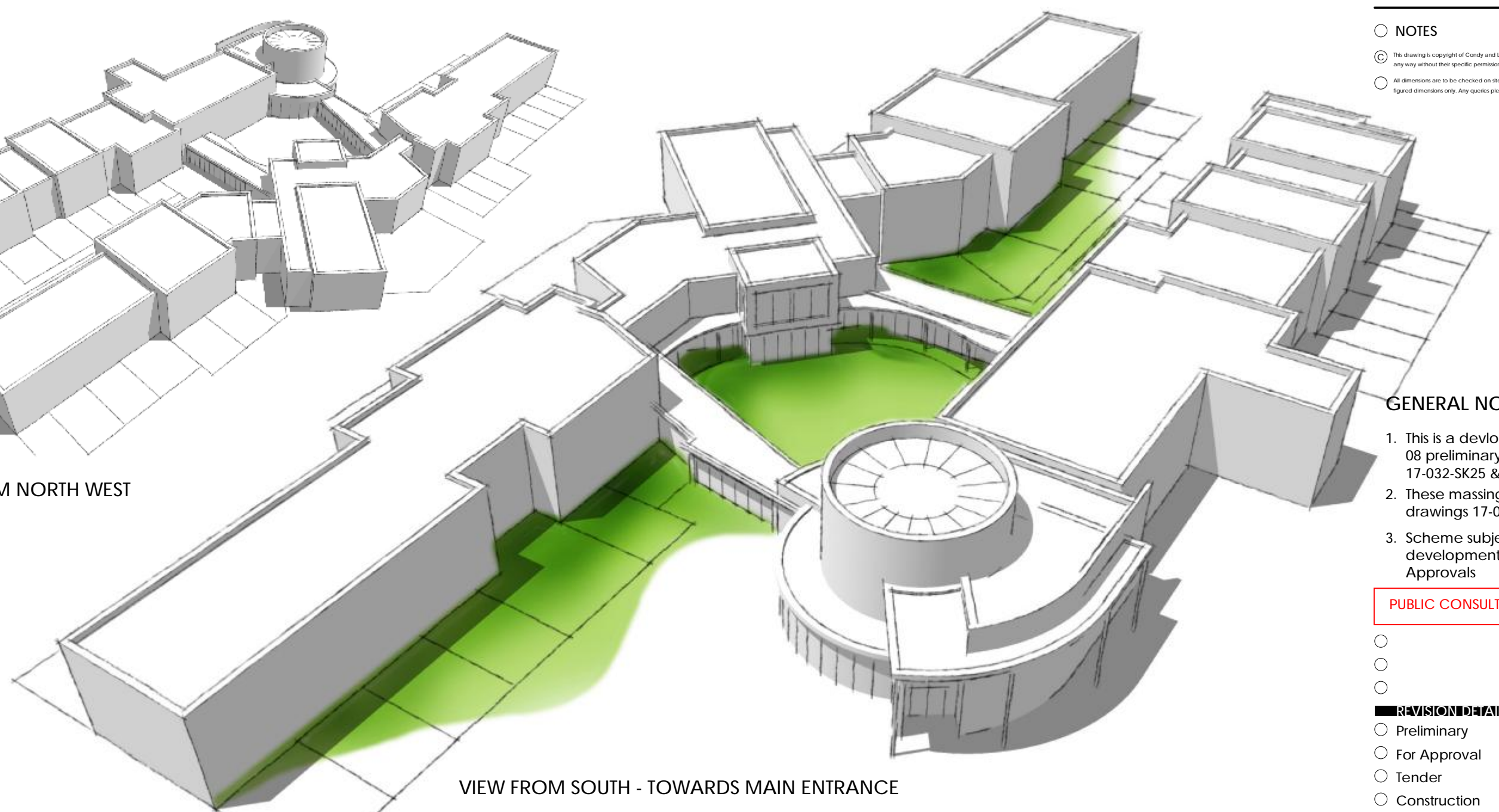
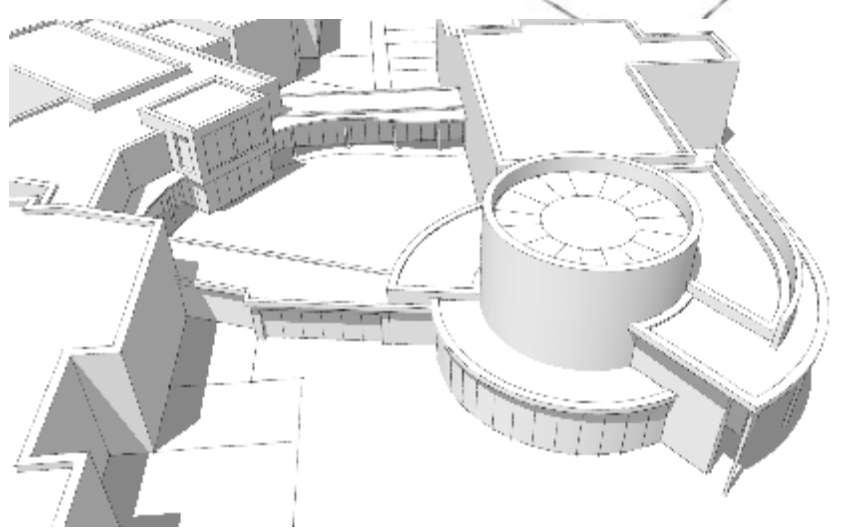


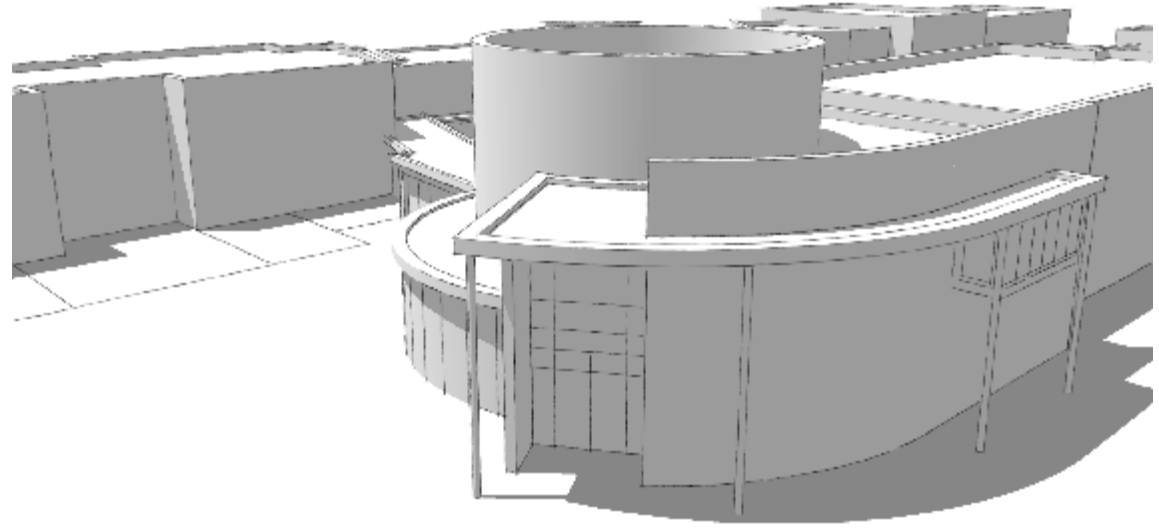
VIEW FROM NORTH WEST



VIEW FROM SOUTH - TOWARDS MAIN ENTRANCE



VIEW FROM SOUTH - INTO CENTRAL COURTYARD GARDEN



VIEW FROM SOUTH EAST - TOWARDS MAIN ENTRANCE

NOTES

- © This drawing is copyright of Condy and Lofthouse Ltd. and may not be reproduced in any way without their specific permission.
- All dimensions are to be checked on site. Do not scale from this drawing, work to figured dimensions only. Any queries please contact the architects.

GENERAL NOTES:

1. This is a development of Scheme 08 preliminary floor plans 17-032-SK25 & 26
2. These massing images relate to drawings 17-032-SK28 & 29 & 31
3. Scheme subject to design development and Statutory Approvals

PUBLIC CONSULTATION DRAWING

- 
- 
- 

REVISION DETAILS date / by

- Preliminary
- For Approval
- Tender
- Construction

CLIENT

ASC Realestate Investments Ltd

PROJECT

Proposed Low Secure Units & Housing  
Mold Road, Gwersyllt  
Wrexham LL11 4AF

DRAWING TITLE

Low Secure Unit - 3D Massing Studies

SCALE drawn by date

NTS@A3 JC 09.06.2017

DRAWING NO. revision

17-032-SK36 ○



T: 0151 207 4371 • F: 0151 207 7087

3D MASSING STUDIES