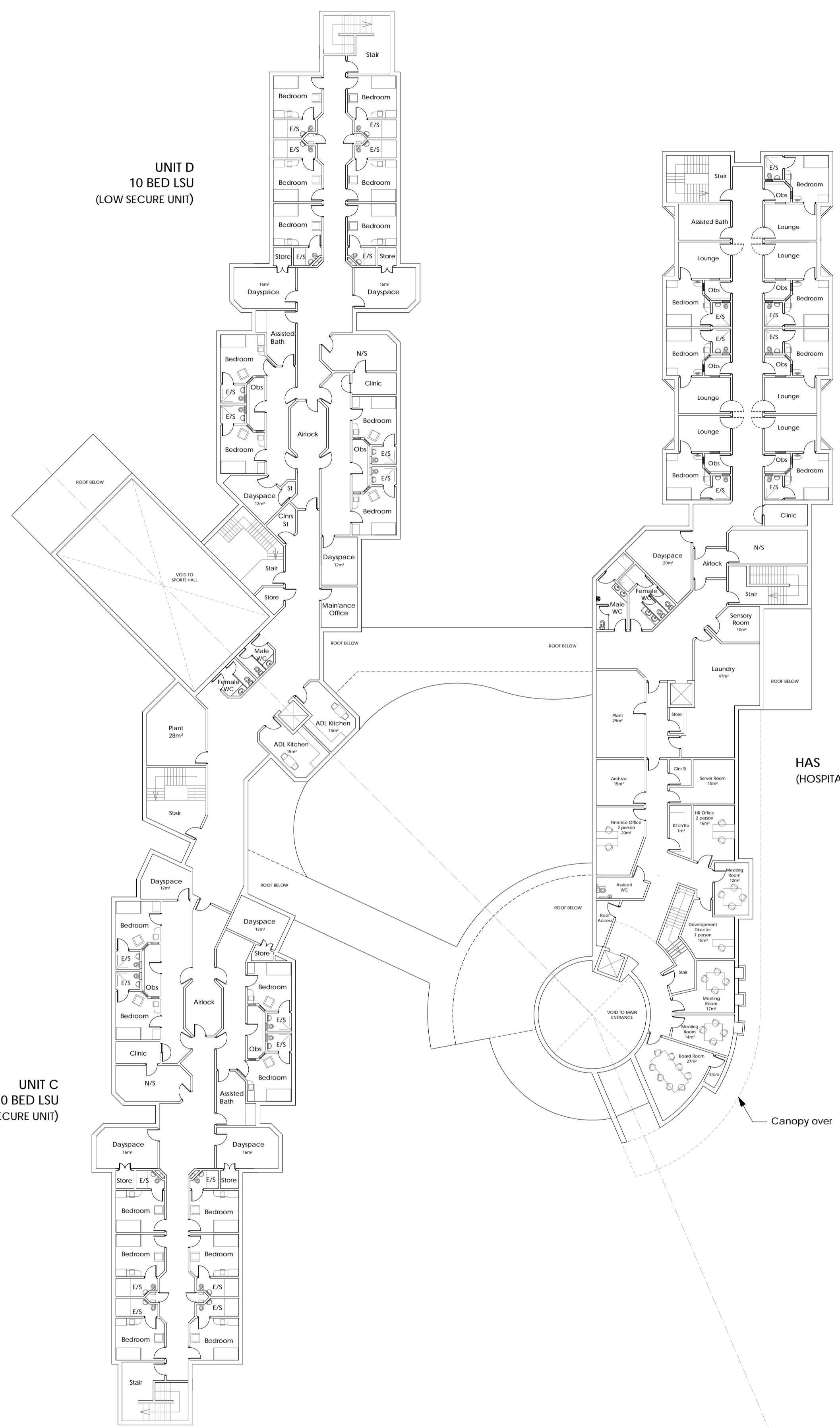


○ NOTES
 © This drawing is copyright of Condy and Lofthouse Ltd. and may not be reproduced in any way without their specific permission.

GENERAL NOTES:
 1. This scheme is subject to detail design development and relevant site surveys
 2. Internal windows and doors not indicated - to be finalised with elevational design

UNIT D
 10 BED LSU
 (LOW SECURE UNIT)

UNIT F
 7 BED ATU
 (ASSESSMENT
 TREATMENT UNIT)



UNIT C
 10 BED LSU
 (LOW SECURE UNIT)

HAS
 (HOSPITAL ADMIN SUITE)

PUBLIC CONSULTATION DRAWING

- Ⓐ Notes added. 28.06.2017 JC
- REVISION DETAILS date / by
- Preliminary
- For Approval
- Tender
- Construction
- CLIENT**
- ASC Realstate Investments Ltd

PROJECT
 Proposed Low Secure Units & Housing
 Mold Road, Gwersyllt
 Wrexham LL11 4AF

DRAWING TITLE
 Low Secure Unit - First Floor Plan -
 As Proposed

SCALE 1:250@A2 **drawn by** MP **date** 20.06.2017

DRAWING NO. 17-032-SK34 **revision** (A)



T: 0151 207 4371 • F: 0151 207 7087